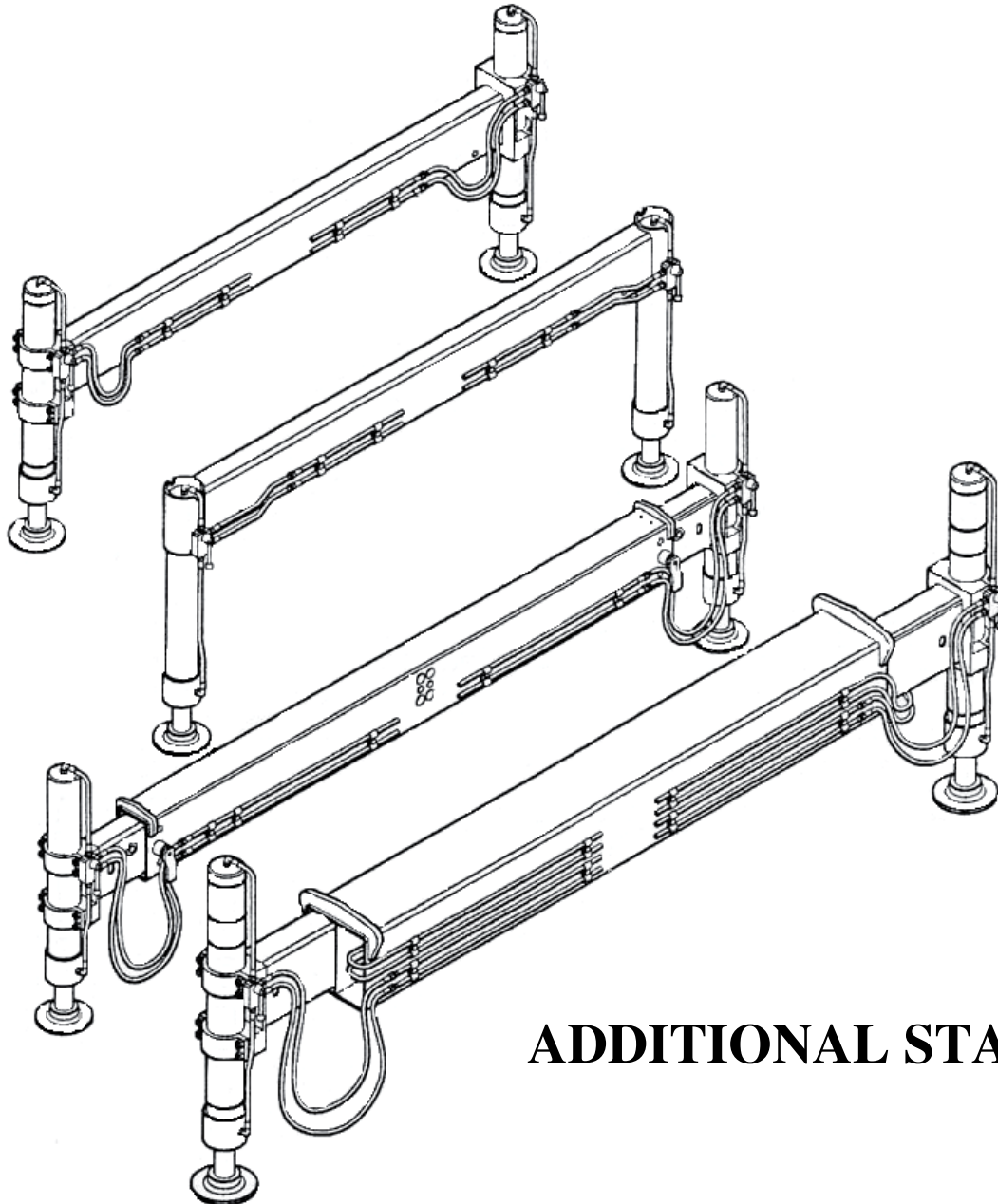


BIGMAX[®]

STA SERIES



ADDITIONAL STABILIZERS

#403-17665-66A Avenue Surrey, BC V3S 2A7 Canada
Tel: 604-575-2103 Toll Free: 877-531-8644 Fax: 604-575-2105
Email: sales@technocrane.ca

MAIN FEATURES

- Planning according to UNI EN 292, DIN 15018 regulations.
- High strength, quenched structural steel (DOMEX 700, WELDOX 700).
- Hydraulic stabilizer cylinders with double effect, adjustable in height through simple operations and equipped with safety valve. Cylinder liner is St 52 steel and shaft in C45 chromed.
- Rigid hydraulic pipes in St 35.4 steel. Hose fittings type SAE 100 R2T.
- Extensions leaning on Teflon sliding rollers with low friction, co-efficient and easy manual outrigging.
- Hydraulic stabilizers/outriggers with cylinders duly protected inside the crossbar. Reduced dimensions with easy access for ordinary maintenance operations.
- Swivel foot-plate standard on larger models; on request on other versions.
- Large choice or optional to fulfill every requirement.

SUPPLY CONDITIONS

- Outriggers / Stabilizers come complete with piping, hose fittings and pilot operated check valves as listed above, all in compliance with the Machine Directive.
- Anti-rust black priming.
- Supplied with “EC Declaration of Conformity” and “Use and Maintenance Instructions” and “Spare Parts Manual”.

NOTICE

- Main beam structure limited in height for easy installation to the truck chassis.
- Wide diameter foot-plates providing excellent stability factor.
- Choice of additional crossbars calculated according to the max lifting moment of the crane, the width of its main outriggers and the distance of the additional crossbar from the column of the crane.

The information contained in this booklet is not binding and can be revised without prior notice. For any further information please contact our technical department.

MODELS	DESCRIPTION	SERIES PRODUCTION								
		OA	0	1	2	3	4	5	6	7
TD-F	FIXED CROSSBARS	•	•	•	•					
TD-EML	MANUALLY EXTENSIBLE WITH OPPOSED RODS	•	•	•	•					
TD-EHL	HYDRAULIC EXTENSIBLE WITH OPPOSED RODS			•	•					
TD-EMP	MANUALLY EXTENSIBLE WITH PARALLEL RODS			•	•					
TD-EHP	HYDRAULIC EXTENSIBLE WITH PARALLEL RODS			•	•	•	•	•		
TD-EHPL	HYDRAULIC EXTENSIBLE WITH PARALLEL LONG RODS							•	•	
TD-EXHP	HYDRAULIC EXTRA EXTENSIBLE WITH PARALLEL DOUBLE EXTENSION RODS							•	•	
TD-EXHPL	HYDRAULIC EXTRA EXTENSIBLE WITH PARALLEL DOUBLE EXTENSION LONG RODS							•	•	•

VERSIONS AND OPTIONALS	DESCRIPTION
MODEL - /C	SHORT CYLINDER
MODEL - /S	STANDARD CYLINDER
MODEL - /L	LONG CYLINDER
CF	FIXED THROUGH - CYLINDER
CR	ADJUSTABLE CYLINDER
PF	STIFF PLATE
PS	ARTICULATED SUPPORT PLATE
CGR	TILTING STABILIZER LEGS
PDA	STABILIZER PADS
PRS	MECHANICAL ROD EXTENSION

VERSIONS



**MODEL - C
SHORT CYLINDER**



**MODEL - S
STANDARD C YLINDER**



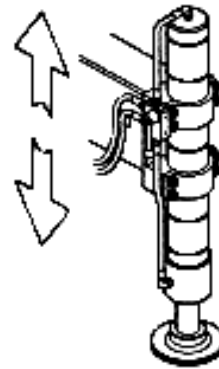
**MODEL - L
LONG CYLINDER**



STANDARD CYLINDER



**CF
FIXED THROUGH
CYLINDER**



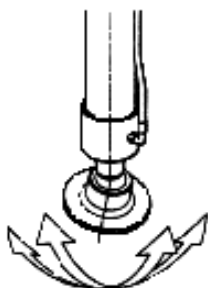
**CR
ADJUSTABLE
CYLINDER**

OPTIONAL

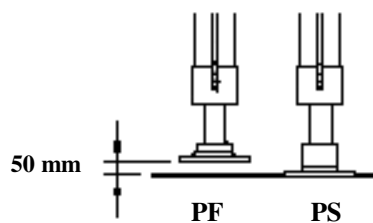
1

PS

ARTICULATED
SUPPORT PLATE



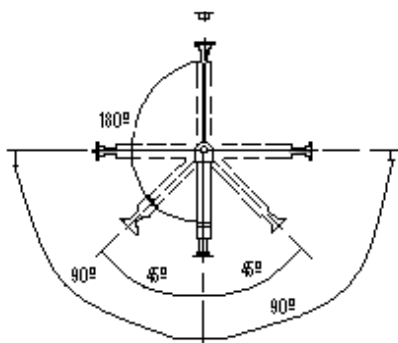
DIMENSION DIFFERENCE



2

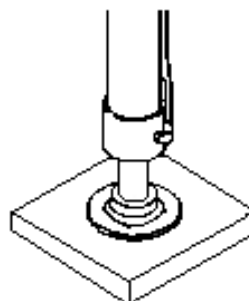
CGR

TILTING STABILIZER LEGS



3

STABILIZER PADS

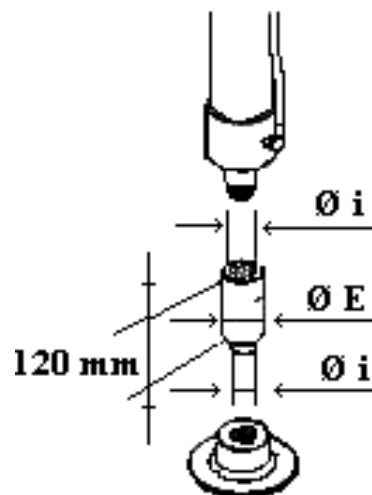


4

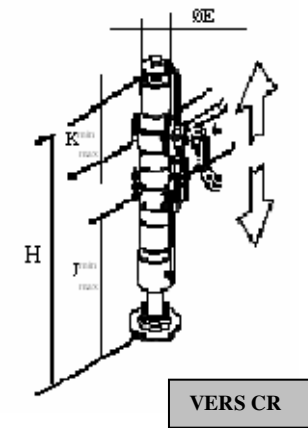
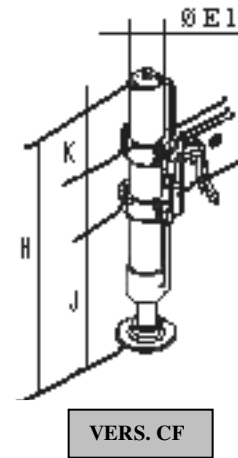
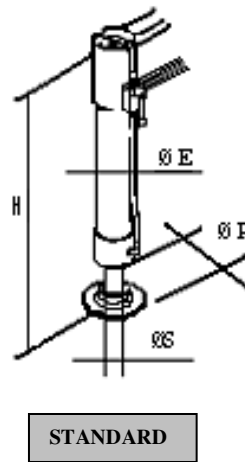
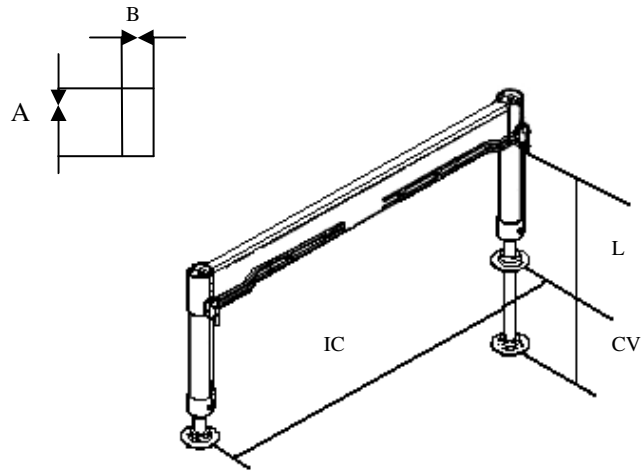
PRS

MECHANICAL ROD EXTENSION

SERIES PRODUCTION	Ø E (mm)	Ø i (mm)
1	60	M39x3
2 / 3 / 4	70	M48x3



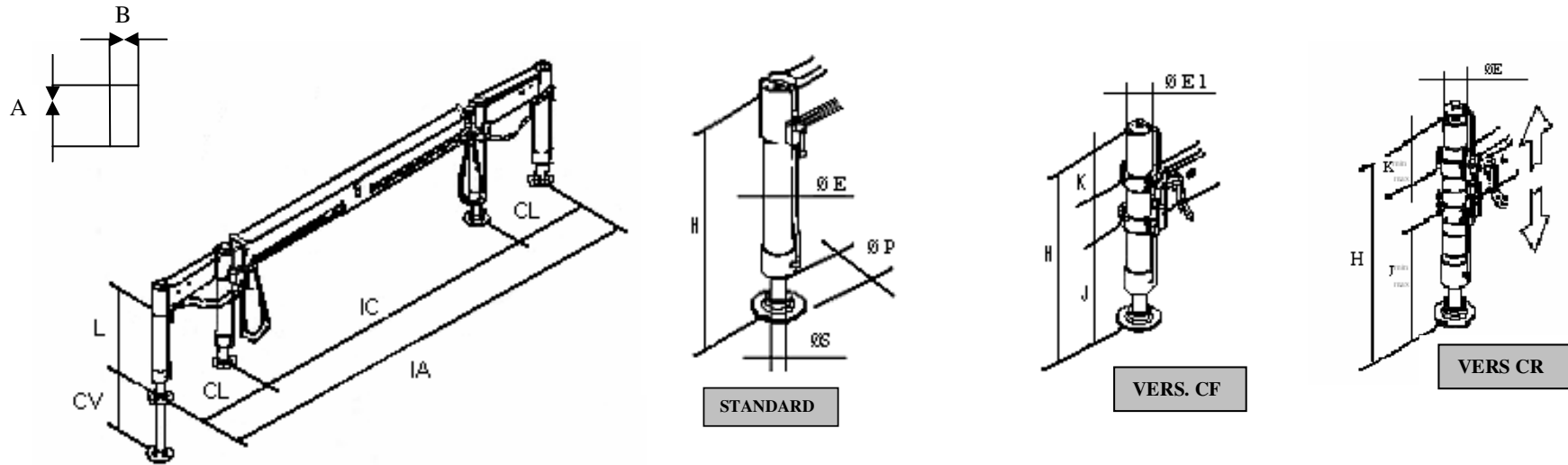
FIXED COSSBARS



☼ OPTIONAL
▲ STANDARD

CRANE ton-m	SERIES	MODEL	MAIN DIMENSIONS (mm)								WEIGHT (kg)	OPTIONALS				CYLINDER DIMENSIONS				
			IC	AxB	L	CV	ØP	ØE	ØS	H						ØE1	VERS. CF		VERS. CR	
												J	K	J min-max	K min-max					
2 - 4	0A	TD-F/S	1800	120x80	440	355	160	70	40	530	65	☼	☼	☼		75	190	220	190-340	60-220
4 - 10	0	TD-F/S	2000	120x80	440	355	160	70	40	530	70	☼	☼	☼		75	190	220	190-340	60-220
10 - 23	1	TD-F/S	2000	180x100	520	455	160	85	60	685	135	☼	☼	☼	☼	90	220	310	200-480	10-310
	1	TD-F/L	2000	180x100	670	580	160	85	60	810	145	☼	☼	☼	☼	90	210	430	210-610	10-430
18 - 31	2	TD-F/C	2100	200x100		470	200	95	60	700	160	☼	☼	☼	☼	100	190	310	190-480	10-310
	2	TD-F/S	2100	200x100	620	550	200	95	60	780	165	☼	☼	☼	☼	100	190	390	190-550	30-390
	2	TD-F/L	2100	200x100	700	635	200	95	60	865	170	☼	☼	☼	☼	100	190	475	190-640	15-475

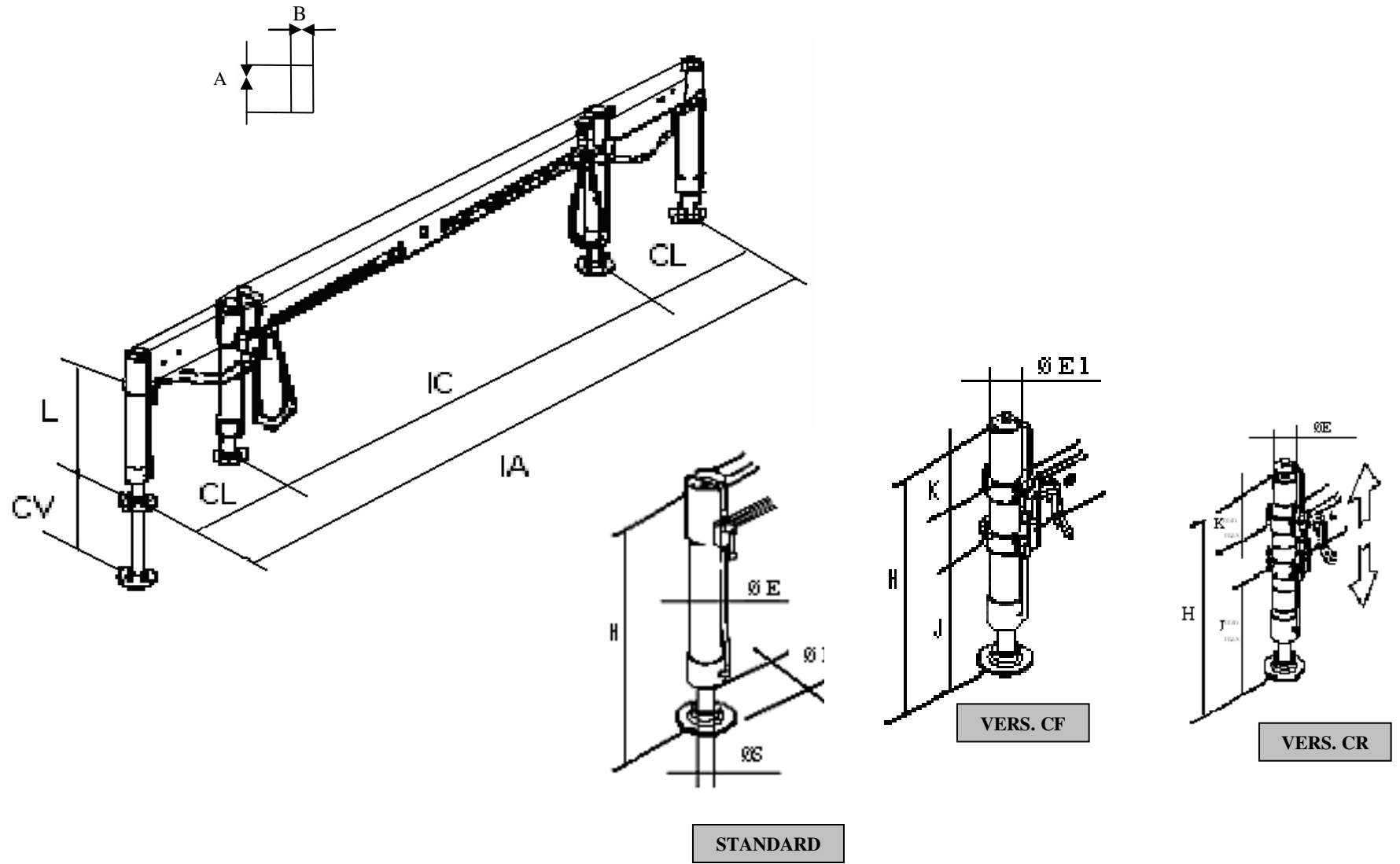
OUTRIGGERS / STABILIZERS WITH OPPOSED RODS



☼ OPTIONAL
▲ STANDARD

CRANE Ton-m	SERIES	MODEL	MAIN DIMENSIONS mm										WEIGHT Kg.	OPTIONALS				CYLINDER DIMENSIONS (mm)				
			IC	CL	IA	AxB	L	CV	ØP	ØE	ØS	H		1	2	3	4	ØE1	VERS. CF		VERS. CR	
																			J	K	J min-max	K min-max
2 - 4	0A	TD-EML/S	1800	500	2800	120x80	400	355	160	70	40	530	95	☼	☼	☼		75	-	-	195-345	65-125
4 - 10	0	TD-EML/S	2100	600	3300	150x100	400	355	160	70	40	530	125	☼	☼	☼		75	-	-	180-330	50-200
10 - 23	1	TD-EML/S	2100	600	3300	200x100	500	455	160	85	60	685	190	☼	☼	☼	☼	90	220	265	190-470	15-295
	1	TD-EML/L	2100	600	3300	200x100	610	580	160	85	60	810	195	☼	☼	☼	☼	90	-	-	190-595	15-240
	1	TD-EHL/S	2100	600	3300	200x100	500	455	160	85	60	685	210	☼	☼	☼	☼	90	220	265	190-470	15-295
	1	TD-EHL/S	2100	600	3300	200x100	610	580	160	85	60	810	215	☼	☼	☼	☼	90	-	-	190-595	15-240
18 - 31	2	TD-EML/C	2100	600	3300	200x100	470	470	200	95	60	700	240	☼	☼	☼	☼	100	200	300	190-475	25-310
	2	TD-EML/S	2100	600	3300	200x100	600	550	200	95	60	780	245	☼	☼	☼	☼	100	250	330	190-550	30-390
	2	TD-EML/L	2100	600	3300	200x100	690	635	200	95	60	865	250	☼	☼	☼	☼	100	-	-	190-640	25-475
	2	TD-EHL/C	2100	600	3300	200x100	470	470	200	95	60	700	260	☼	☼	☼	☼	100	200	300	190-475	25-310
	2	TD-EHL/S	2100	600	3300	200x100	600	550	200	95	60	780	265	☼	☼	☼	☼	100	250	330	190-550	30-390
	2	TD-EHL/L	2100	600	3300	200x100	690	635	200	95	60	865	270	☼	☼	☼	☼	100	-	-	190-640	25-475

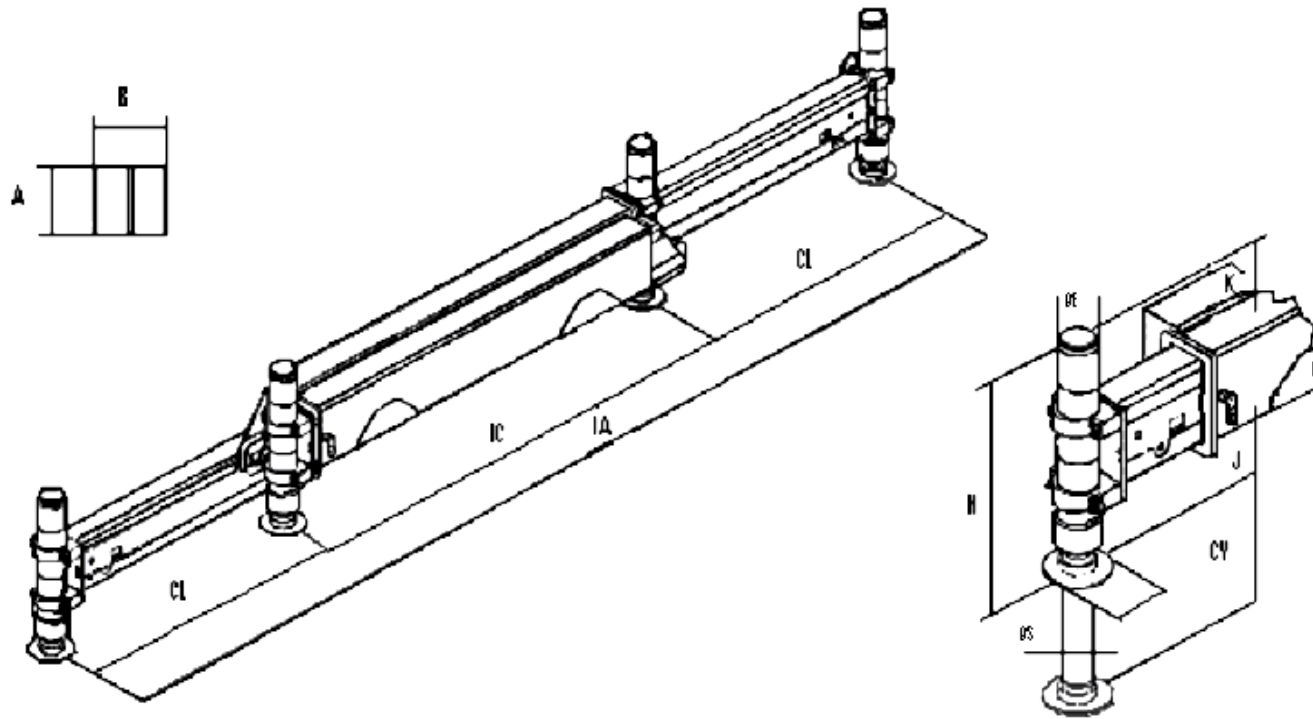
OUTRIGGERS / STABILIZERS WITH PARALLEL RODS



☼ OPTIONAL
▲ STANDARD

CRANE Ton-m	SERIES	MODEL	MAIN DIMENSIONS mm										WEIGHT Kg.	OPTIONALS				CYLINDER DIMENSIONS (mm)				
			IC	CL	IA	AxB	L	CV	ØP	ØE	ØS	H		ØE1	VERS. CF		VERS. CR					
															J	K	J min-max	K min-max				
1	2	3	4																			
10 – 23	1	TD-EMP/S	2100	1150	4400	200x200	500	455	160	85	60	685	300	☼	☼	☼	☼	90	220	265	190-470	15-295
	1	TD-EMP/L	2100	1150	4400	200x200	610	580	160	85	60	810	305	☼	☼	☼	☼	90	-	-	190-595	15-420
	1	TD-EHP/S	2100	1150	4400	200x200	500	455	160	85	60	685	340	☼	☼	☼	☼	90	220	265	190-470	15-295
	1	TD-EHP/L	2100	1150	4400	200x200	610	580	160	85	60	810	345	☼	☼	☼	☼	90	-	-	190-595	15-420
18-31	2	TD-EMP/C	2100	1300	4700	200x235	470	470	200	95	60	700	340	☼	☼	☼	☼	100	200	300	190-475	25-310
	2	TD-EMP/S	2100	1300	4700	200x235	600	550	200	95	60	780	350	☼	☼	☼	☼	100	250	330	190-550	30-390
	2	TD-EMP/L	2100	1300	4700	200x235	690	635	200	95	60	865	355	☼	☼	☼	☼	100	-	-	190-640	25-475
	2	TD-EHP/C	2100	1300	4700	200x235	470	470	200	95	60	700	380	☼	☼	☼	☼	100	200	300	190-475	25-310
	2	TD-EHP/S	2100	1300	4700	200x235	600	550	200	95	60	780	390	☼	☼	☼	☼	100	250	330	190-550	30-390
	2	TD-EHP/L	2100	1300	4700	200x235	690	635	200	95	60	865	395	☼	☼	☼	☼	100	-	-	190-640	25-475
20 – 38	3	TD-EHP/C	2200	1400	5000	250x235	470	470	200	95	60	700	435	▲	☼	☼	☼	100	220	230	165-450	0-285
	3	TD-EHP/S	2200	1400	5000	250x235	600	550	200	95	60	780	445	▲	☼	☼	☼	100	270	260	165-525	5-365
	3	TD-EHP/L	2200	1400	5000	250x235	690	635	200	95	60	865	460	▲	☼	☼	☼	100	-	-	165-615	0-450
30 – 50	4	TD-EHP/C	2200	1400	5000	300x235	540	565	200	105	60	810	530	▲		☼	☼	110	210	300	245-495	25-275
	4	TD-EHP/S	2200	1400	5000	300x235	690	735	200	105	70	960	545	▲		☼		110	280	380	245-645	15-415
50 – 80	5	TD-EHP/C	2200	1400	5000	305x280	510	460	200	125	70	820	665	▲		☼		130	220	295	-	-
	5	TD-EHP/L	2200	1400	5000	305x280	660	610	200	125	90	970	675	▲		☼		-	-	-	-	-
40 – 70	5	TD-EHPL/C	2350	1800	5950	320x320	510	460	200	125	90	820	805	▲		☼		130	230	270	-	-
	5	TD-EHPL/L	2350	1800	5950	320x320	660	610	200	125	90	970	815	▲		☼		-	-	-	-	-
70 - 100	6	TD-EHPL/C	2350	1800	5950	340x340	480	460	200	125	90	820	1065	▲		☼		130	230	270	-	-
	6	TD-EHPL/L	2350	1800	5950	340x340	630	610	200	125	90	970	1075	▲		☼		-	-	-	-	-

HYDRAULIC OUTRIGGERS/STABILIZERS WITH PARALLEL LONG

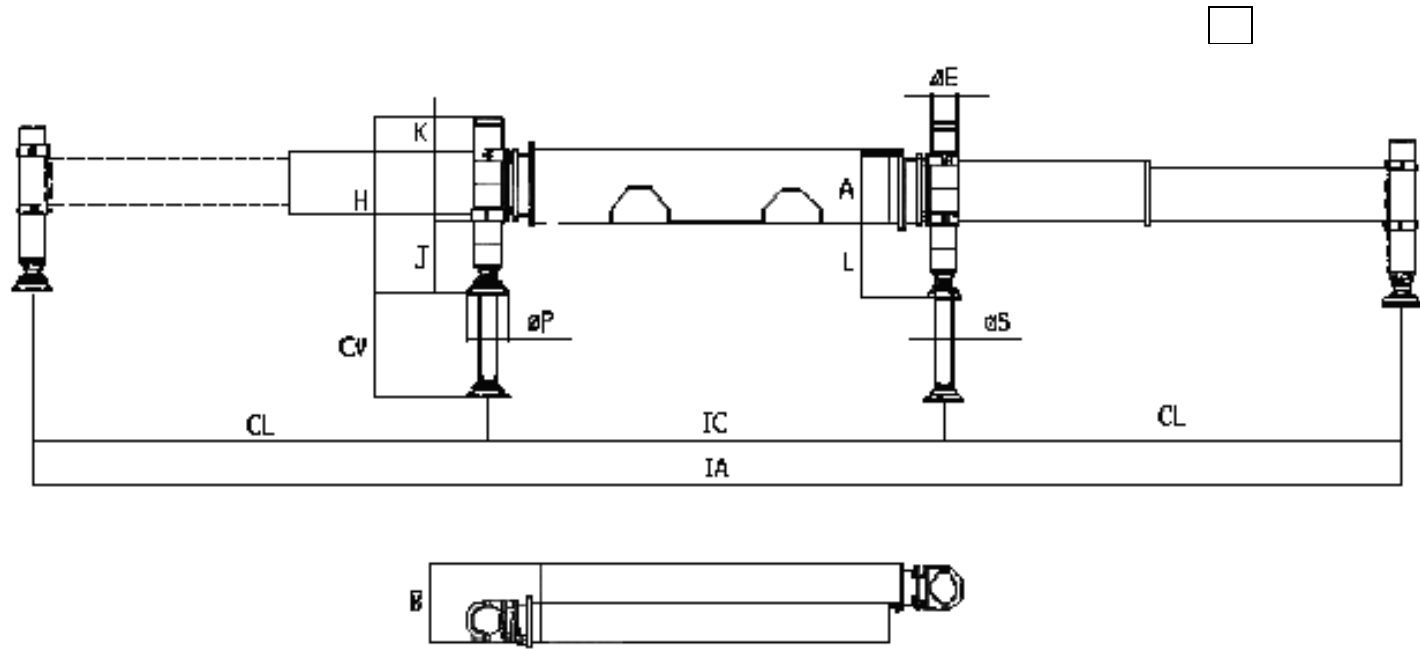


CRANE TON-M	SERIES	MODEL	MAIN DIMENSIONS (MM)												WEIGHT KG	OPTIONS	
			IC	CL	IA	A	B	CV	ØP	ØE	ØS	H	J MIN-MAX	K MIN-MAX		PS	PDA
40 - 70	5	TD-EHPL/C	2350	1800	5950	320	320	460	200	120	90	850	170-670	0-420	885	▲	☼
	5	TD-EHPL/L	2350	1800	5950	320	320	610	200	120	90	1000	170-770	0-570	900	▲	☼

PS: ARTICULATED SUPPORT PLATE
PDA: STABILIZER/OUTRIGGER PADS

☼ OPTIONAL
▲ STANDARD

HYDRAULIC STABILIZERS/OUTRIGGERS WITH PARALLEL DOUBLE-EXTENSION RODS

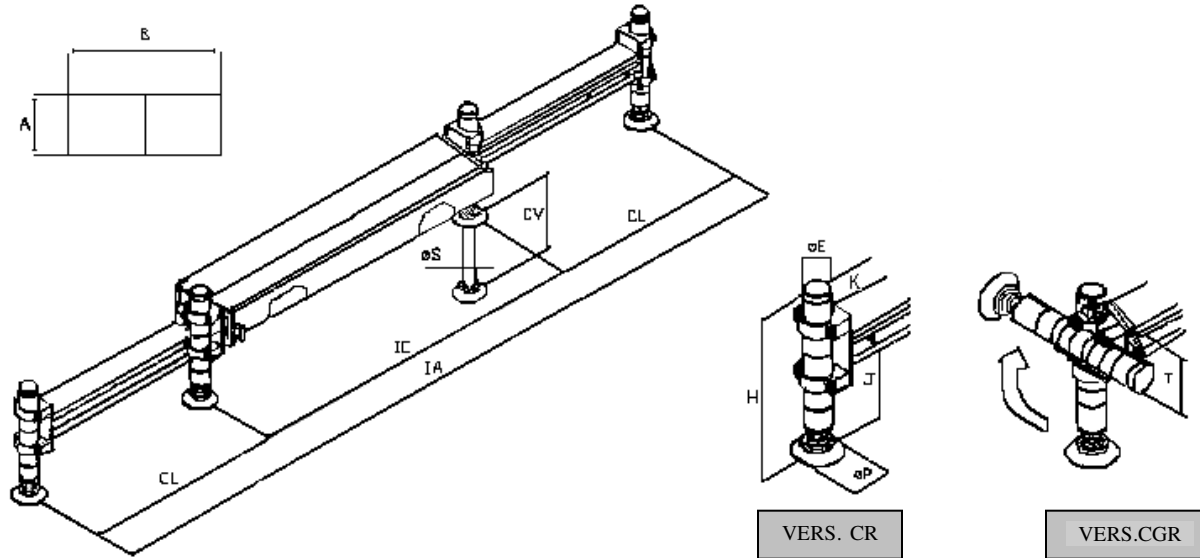


CRANE TON-M	SERIES	MODEL	MAIN DIMENSIONS (MM)													WEIGHT KG	OPTIONS	
			IC	CL	IA	A	B	L	CV	ØP	ØE	ØS	H	J MIN - MAX	K MIN-MAX		PS	PDA
50-80	5	TD-EXHPL/C	2300	2300	6900	320	350	510	460	200	120	90	850	150-650	0-430	1060	▲	☼
	5	TD-EXHPL/L	2300	2300	6900	320	350	660	610	200	120	90	1000	150-750	0-580	1060	▲	☼

PS: ARTICULATED SUPPORT PLATE
PDA: STABILIZER/OUTRIGGER PADS

☼ OPTIONAL
▲ STANDARD

HYDRAULIC UNDER-CHASSIS STABILIZERS/OUTRIGGERS WITH PARALLEL RODS



CRANE TON-M	SERIES	MODEL	MAIN DIMENSIONS (MM)												WEIGHT KG	OPTIONS		VERS CGR
			IC	CL	IA	A	B	CV	ØP	ØE	ØS	H	J MIN - MAX	K MIN-MAX		PS	PDA	
30-50	4	TD-BLEHP/C	2350	1575	5500	170	435	565	200	110	70	850	280-600	130-440	740	▲	☼	225
	4	TD-BLEHP/S	2350	1575	5500	170	435	735	200	110	70	1000	280-760	130-590	7600	▲	☼	225

PS: ARTICULATED SUPPORT PLATE
 PDA: STABILIZER/OUTRIGGER PADS

☼ OPTIONAL
 ▲ STANDARD