



SEALAND

F/M

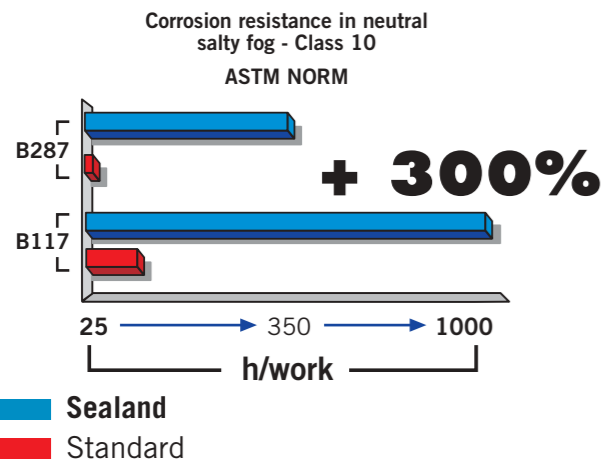
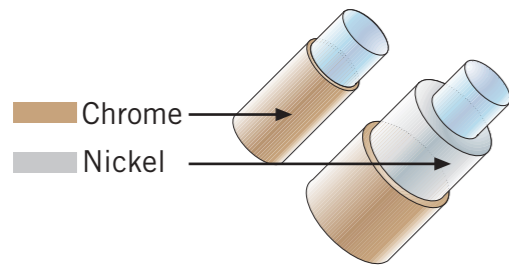
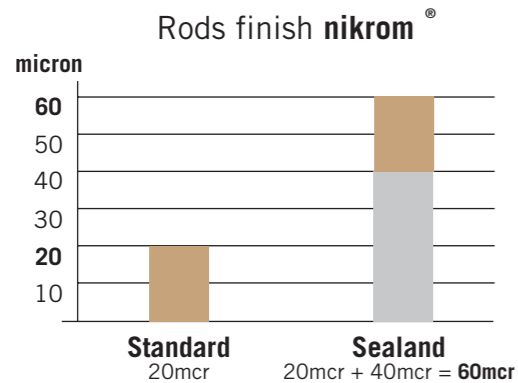


AMCO  **VEBA**
GROUP

Sealand Series

from 2 to 80 tm.

DOUBLE CROSS CHROME PLATING, 60 MICRONS THICK ON RODS IN ALL CYLINDERS



ALL GALVANIZED STEEL, PAINTED OR STAINLESS STEEL

WHOLE STRUCTURE SHOT BLASTED AND TREATED WITH ZINC BASE PRIOR PAINTING (MIN. THICK. 100 MICRONS)



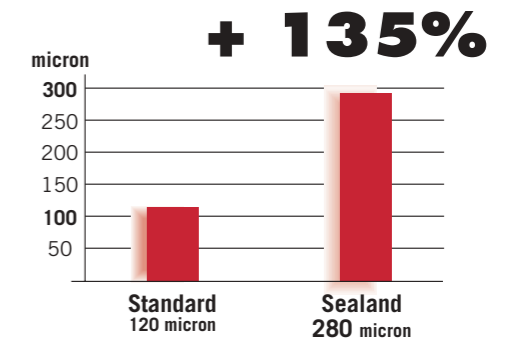
STAINLESS STEEL FITTINGS ON ALL HOSES



F = Trattamento marino standard
Standard marine treatment
Standard marin traitement
Standard marine Behandlung
tratamiento marino estandard
tratamento marinho standard

M = trattamento marino totale
Total marine treatment
Total marin traitement
Total marine Behandlung
Tratamiento marino total
Tratamento marinho total

PAINTING: FIRST COAT WITH EPOXIDAL BI-COMPONENT (MIN. THICK. 250-280 MICRONS), FINAL DOUBLE COAT WITH POLYURETHANE BI-COMPONENT ENAMEL



DOUBLE CROSS CHROME PLATING ON ALL BARRELS



CHEMICAL NICKEL PLATING ON ALL PINS



Sealand Series



from 2 to 80 tm.

- Sistema di rotazione progettato appositamente per condizioni marine
 - Basamento fisso che permette una facile installazione
 - Valvole di blocco flangiate sui cilindri
 - Bracci telescopici esagonali rigidi e auto-allineati, che offrono un maggior controllo del carico
 - Distributore non installato che permette una maggior libertà di comando
 - Valvole che eliminano il problema del sovraccarico
- 1) Doppia cromatura, spessore 60 Microns sugli steli di tutti i cilindri (M)
 - 2) Nichelatura chimica su tutti i perni (M)
 - 3) Doppia cromatura su tutti i cilindri (M)
 - 4) Raccordi in acciaio inossidabile su tutti i tubi (M)
 - 5) Acciaio interamente zincato, verniciato o inossidabile
 - 6) Struttura interamente sabbiata e trattata con fondo zincato (spessore min. 100 Microns) prima della verniciatura
 - 7) Verniciatura: primo strato bi-componente epossidico, doppio strato finale smalto bi-componente poliuretano (spessore totale dello strato di prodotto verniciante min. 250-280 Microns) (M)

- Powerful rotation system especially designed for marine conditions
 - Stationary base for easy installation on vessel
 - Counterbalance valves are direct mounted to each cylinder
 - Hexagonal shaped telescopic booms are stronger and self-aligning, offering greater load handling control
 - Control valve is plumbed and shipped demounted with sufficient hose for mounting in stand-up position near crane
 - Overload protected by port relief valves working in conjunction with the main relief counterbalance valves
- 1) Double cross chrome plating, 60 Microns thick on rods in all cylinders (M)
 - 2) Chemical nickel plating on all pins (M)
 - 3) Double cross chrome plating on all barrels (M)
 - 4) Stainless steel fittings on all hoses (M)
 - 5) All galvanized steel, painted or stainless steel
 - 6) Whole structure shot blasted and treated with zinc base prior painting (min. thick. 100 Microns)
 - 7) Painting: first coat with epoxidal bi-component (min. thick. 250-280 Microns), final double coat with polyurethane bi-component enamel (M)

- Système de rotation très puissante projeté exprès pour conditions marines
 - Base fixe qui permet une installation très facile
 - Soupapes d'arrêt montées directement sur le cylindres
 - Bras telescopiques hexagonaux très solides et auto alignés, qui permettent un plus grand contrôle de la charge
 - Distributeur fermé et envoyé à part avec tuyaux hydrauliques suffisants pour le monter à côté de la grue
- 1) Double surface chromée, 60 microns d'épaisseur sur la tige sur claqué vérin (M)
 - 2) Plaquage nickel sur tous les pivots et axes (M)
 - 3) Double surface chromée sur toutes les tiges (M)
 - 4) Raccords inox sur les flexibles (M)
 - 5) Acier complètement galvanisé, peint ou acier inox
 - 6) Structure complètement grenillée avant la peinture, zinguée avec épaisseur minimum de 100 Microns
 - 7) Peinture avec primer époxy bi-composants (épaisseur minimum de 250-280 Microns), surface finale avec polyuréthane enamel bi-composants (M)

Sealand Series

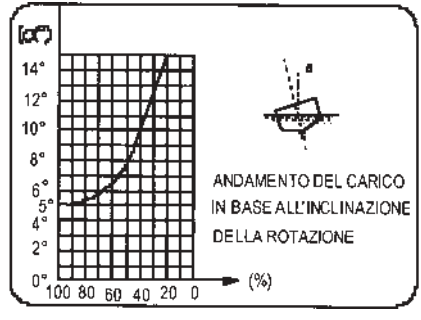


from 2 to 80 tm.

- Starkes Schwenksystem, speziell für Manne-Bedingungen konzipiert.
 - Fester Sockel zur einfachen Montage.
 - Lasthalteventile direkt an jedem Zylinder montiert.
 - Sehr robuste Sequenz-Teleskopausschübe aus Sechskant Profil, die eine bessere Kontrolle der Last ermöglichen.
 - Geschlossener Steuerblock, welcher in demontiertem Zustand versandt wird, einschl. ausreichender Hydraulik-Leitungen, um die Montage in Krannähe zu ermöglichen.
 - Ein Überladen wird durch spezielle Ventile verhindert, die Verbindung mit dem Lasthalteventil agieren.
- 1) Doppeltes Chrom Plackierung, 60 Microns dicht auf Bolzen in alle Zylindern (M)
 - 2) Chemisch Nickel plackierten Stifte (M)
 - 3) Zweimaliges Chrom plackierten Zylindern (M)
 - 4) Rostfreistahl Anschlüsse auf alle Schlauche (M)
 - 5) Komplett galvanisierten Stahl, lackierten Stahl oder Rostfreistahl
 - 6) Ganze Struktur wird vor erste und Endlackierung sandgestrahlt und gezinnt mit eine mindestens Dicke von 100 Mikrons
 - 7) Epoxydale und zwei Komponenten Lackierung (mindestens Dicke von 250-280 Mikrons); Endlackierung mit polyurethanische zwei Komponenten Lack (M)

- Potente sistema de rotacion proyectado especialmente para condiciones marinas
 - Base fija que permite una instalacion facil
 - Valvulas de bloqueo montadas directamente sobre cada uno de los cilindros
 - Brazo telescopico exagonal muy robusto y autoalineante, ofrece un mayor control de la carga
 - Comandos hidraulicos calibrados y sellados, se entregan desmontados con las mangueras necesarias para su facil montaje proximo a la grua
 - Control de sobrecarga con adecuadas valvulas que trabajan junto a las principales valvulas de bloqueo
- 1) Doble cromado, espesor 60 Microns en los vastagos de todos los cilindros (M)
 - 2) Niquelado quimico en todos los pernos (M)
 - 3) Doble cromado en todos los cilindros (M)
 - 4) Conexiones en acero inoxidable en todos los tubos (M)
 - 5) Todo acero cincado, pintado o inoxidable
 - 6) Toda estructura arenada y tratada con hondo cincante antes de la pintura (espesor min. 100 Microns)
 - 7) Pintura primera con bi-componente epoxidico (espesor min. 250-280 Microns), doble pintura final con esmalte bi-componente poliuretano (M)

- Forte sistema de rotação especialmente desenhado para as condições marítimas.
 - Base fixa ajustavel para facil instalação.
 - Valvulas de sugurança, directamente montadas em cada cilindro.
 - Braços telescopicos do forma hexagonais, fortes e auto alinhados, oferecendo um excelente controlo manual.
 - Valvulas de controlo verticais fixas na embarcação com suficiente distancia para ascender a posição de trabalho junto a grua.
 - Duplamente protegido por valvulas auxiliares em conjunção com as valvulas principais e as valvulasde segurança.
- 1) Duplo chapeamento do cromo, 60 Microns de espessura nas hastes de todos os cilindros (M)
 - 2) Chapeamento niquelar químico em todos os pinos (M)
 - 3) Duplo chapeamento do cromo em todas as tubulações (M)
 - 4) Encaixes de aço inoxidável em todas as mangueiras (M)
 - 5) Todo o aço inoxidável galvanizado ou pintado
 - 6) Toda a estrutura com tratamento de zinco a prévia pintura (espessura min.100 Microns)
 - 7) Pintura: primeiro revestimento com bi-componente epoxidal, duplo revestimento final com bi-componente de poliuretano (espessura min. 250-280 Microns) (M)



702 T/1S

Kg - H1	1820*	995	580	380
Kg - H2	1274*	696	490	266
m.	1.0	1.75	3.13	4.68

702 T/2S

Kg - H1	1870*	995	580	380	280
Kg - H2	1309*	696	490	320	196
m.	1.0	1.84	3.22	4.70	6.26

703 T/1S

Kg - H1	3060*	1750	910	600
Kg - H2	2142*	1490	770	500
m.	1.0	1.75	3.13	4.68

703 T/2S

Kg - H1	3000*	1630	880	580	420
Kg - H2	2100*	1390	750	490	360
m.	1.0	1.84	3.22	4.70	6.26

705 T/2S

Kg - H1	4110*	2100	1160	750	550
Kg - H2	2878*	1790	990	640	470
m.	1.0	1.96	3.34	4.96	6.52

705 T/3S

Kg - H1	4040*	1980	1100	700	520	400
Kg - H2	2828*	1680	940	600	440	340
m.	1.0	2.04	3.42	5.04	6.42	7.99

807 T/2S

Kg - H1	6900*	3350	1860	1230	860	640
Kg - H2	4830*	2850	1580	1050	730	540
m.	1.0	2.06	3.63	5.28	7.02	8.81

807 T/3S

Kg - H1	6800*	3150	1750	1150	830	610
Kg - H2	4760*	2680	1490	980	710	520
m.	1.0	2.16	3.73	5.38	7.11	8.91

8500SS/2S

Kg - H1	8280*	3800	2100	1350
Kg - H2	5796*	3296	1860	1170
m.	1.0	2.18	3.94	5.70

8500SS/3S

Kg - H1	8240*	3600	1950	1320	920
Kg - H2	5768*	3120	1765	124	644
m.	1.0	2.29	4.05	5.69	7.33

815 T/2S

Kg - H1	14300*	6350	3420	2285	1600	1200	930
Kg - H2	10010*	4445	2394	1599	1120	840	651
m.	1.0	2.25	4.05	5.92	7.99	10.05	12.24

815 T/3S

Kg - H1	14040*	6000	3260	2130	1550	1160	890	720
Kg - H2	9828*	4200	2282	1491	1085	812	623	504
m.	1.0	2.34	4.14	6.01	7.99	10.05	12.24	14.36

815 T/4S

Kg - H1	14040*	5800	3125	2020	1440	1125	880	700
Kg - H2	10850*	4060	2191	1414	1008	791	616	490
m.	1.0	2.42	4.22	6.09	8.07	10.05	12.24	14.36

817 T/2S

Kg - H1	15500*	6500	3530	2390	1690	1290	1000
Kg - H2	10850*	4599	2478	1680	1197	910	700
m.	1.0	2.25	4.05	5.92	7.99	10.05	12.24

817 T/3S

Kg - H1	15000*	6200	3360	2220	1640	1240	970	790
Kg - H2	10850*	4340	2352	1554	1148	868	679	553
m.	1.0	2.34	4.14	6.01	7.99	10.05	12.24	14.36

817 T/4S

Kg - H1	15000*	6000	3220	2110	1530	1200	950	770
Kg - H2	10850*	4200	2261	1484	1078	847	672	546
m.	1.0	2.42	4.22	6.09	8.07	10.05	12.24	14.36

703/1S

Kg - H1	2800*	1400*	830	560	420
Kg - H2	1960*	1400*	710	480	350
m.	1.0	2.0	3.37	4.73	6.20

703/2S

Kg - H1	2800*	1380*	800	540	405	300
Kg - H2	1960*	1380*	680	460	340	250
m.	1.0	2.0	3.45	4.82	6.20	7.71

703/3S

Kg - H1	2680*	1340*	760	510	380	300
Kg - H2	1876*	1340*	650	430	320	250
m.	1.0	2.0	3.52	4.89	6.28	7.66

704/1S

Kg - H1	3660*	1830*	995	720	550
Kg - H2	2562*	1830*	850	610	470
m.	1.0	2.0	3.68	5.06	6.62

704/2S

Kg - H1	3700*	1850*	985	710	535	400
Kg - H2	2590*	1850*	840	600	450	340
m.	1.0	2.0	3.76	5.14	6.62	8.18

704/3S

Kg - H1	3520*	1760*	930	640	370	280
Kg - H2	2464*	1760*	651	448	322	259
m.	1.0	2.0	3.79	5.14	6.62	8.18

704/4S

Kg - H1	3400*	1700*	880	600	420	330	280	210
Kg - H2	2380*	1700*	616	420	294	231	196	147
m.	1.0	2.0	3.86	5.24	6.86	8.24	9.63	11.2

706/1S

Kg - H1	6380*	3190*	1730	1210	890
Kg - H2	4464*	3190*	1211	847	623
m.	1.0	2.0	3.69	5.24	6.93

706/2S

Kg - H1	6170*	3085*	1640	1150	870	660
Kg - H2	4319*	3085*	1390	980	740	560
m.	1.0	2.0	3.76	5.31	6.93	8.63

706/3S

Kg - H1	5950*	2975*	1550	1100	840	640	500
Kg - H2	4165*	2975*	1320	940	710	540	420
m.	1.0	2.0	3.84	5.39	7.01	8.63	10.17

809/1S

Kg - H1	9450*	3490	2350	1700	1250	850	600
Kg - H2	6615*	4100	2000	1450	1060	720	510
m.	1.0	2.24	4.02	5.60	7.30	9.02	10.82

809/2S

Kg - H1	9270*	3950	2250	1600	1200	820	580	350
Kg - H2	6489*	3360	1910	1360	1020	700	490	300
m.	1.0	2.24	4.12	5.70	7.35	9.07	10.90	12.65

809/3S

Kg - H1	8860*	3850	2100	1470	1100	810	550	350
Kg - H2	6202*	3270	1790	1250	940	690	470	300
m.	1.0	2.24	4.22	5.80	7.45	9.18	11.00	12.75

811/1S

Kg - H1	10450*	4400	2600	1860	1370	950	670
Kg - H2	7315*	3740	2210	1580	1160	810	570
m.	1.0	2.24	4.02	5.60	7.30	9.02	10.82

811/2S

Kg - H1	10220*	4220	2480	1750	1320	940	650	430
Kg - H2	7154*	3590	2110	1490	1120	800	550	360
m.	1.0	2.24	4.12	5.70	7.35	9.07	10.87	12.65

811/3S

Kg - H1	9500*	4200	2250	1600	1200	900	640	430
Kg - H2	6650*	3570	1910	1360	1020	770	540	360
m.	1.0	2.24	4.22	5.80	7.45	9.18	11.00	12.75

812/1S

Kg - H1	11850*	4730	2730	1910
Kg - H2	8295*	3311	1911	1337
m.	1.0	2.50	4.34	6.14

812/2S

Kg - H1	11270*	4470	2550	1800	1360	1000	730	545
Kg - H2	7889*	3129	1785	1260	952	700	511	381
m.	1.0	2.50	4.42	6.23	8.10	10.16	12.23	14.42

812/3S

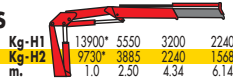
Kg - H1	10960*	4330	2430	1700	1260	1000	730	545	390
Kg - H2	7672*	3031	1701	1190	882	700	511	381	273
m.	1.0	2.50	4.51	6.31	8.18	10.16	12.23	14.42	16.53

812/4S

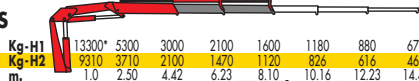
Kg - H1	10670*	4210	2320	1580	1160	890	730	545	390
Kg - H2	7469*	2947	1624	1106	812	623	511	381	273
m.	1.0	2.50	4.60	6.40	8.27	10.25	12.23	14.42	16.54

812/5S

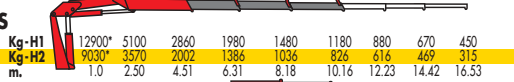
Kg - H1	10530*	4150	2250	1535	1110	835	665	545	390
Kg - H2	7371*	2905	1575	1074	777	584	465	381	273
m.	1.0	2.50	4.68	6.48	8.35	10.33	12.31	14.31	16.54

815/1S

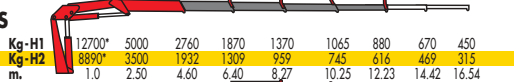
Kg-H1	13900*	5550	3200	2240
Kg-H2	9730*	3885	2240	1568
m.	1.0	2.50	4.34	6.14

815/2S

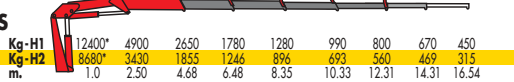
Kg-H1	13300*	5300	3000	2100	1600	1180	880	670
Kg-H2	9310*	3710	2100	1470	1120	826	616	469
m.	1.0	2.50	4.42	6.23	8.10	10.16	12.23	14.42

815/3S

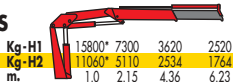
Kg-H1	12900*	5100	2860	1980	1480	1180	880	670	450
Kg-H2	9030*	3570	2002	1386	1036	826	616	469	315
m.	1.0	2.50	4.51	6.31	8.18	10.16	12.23	14.42	16.53

815/4S

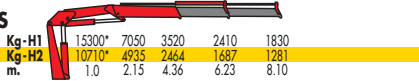
Kg-H1	12700*	5000	2760	1870	1370	1065	880	670	450
Kg-H2	8890*	3500	1932	1309	959	745	616	469	315
m.	1.0	2.50	4.60	6.40	8.27	10.25	12.23	14.42	16.54

815/5S

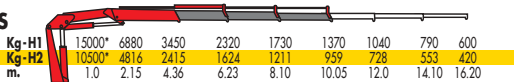
Kg-H1	12400*	4900	2650	1780	1280	990	800	670	450
Kg-H2	8680*	3430	1855	1246	896	693	560	469	315
m.	1.0	2.50	4.68	6.48	8.35	10.33	12.31	14.31	16.54

817/1S

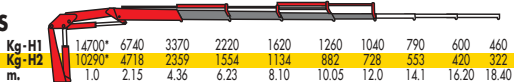
Kg-H1	15800*	7300	3620	2520
Kg-H2	11060*	5110	2534	1764
m.	1.0	2.15	4.36	6.23

817/2S

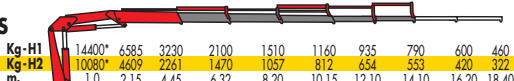
Kg-H1	15300*	7050	3520	2410	1830
Kg-H2	10710*	4935	2464	1687	1281
m.	1.0	2.15	4.36	6.23	8.10

817/3S

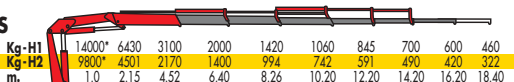
Kg-H1	15000*	6880	3450	2320	1730	1370	1040	790	600
Kg-H2	10500*	4816	2415	1624	1211	959	728	553	420
m.	1.0	2.15	4.36	6.23	8.10	10.05	12.0	14.10	16.20

817/4S

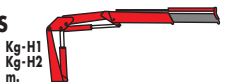
Kg-H1	14700*	6740	3370	2220	1620	1260	1040	790	600	460
Kg-H2	10290*	4718	2359	1554	1134	882	728	553	420	322
m.	1.0	2.15	4.36	6.23	8.10	10.05	12.0	14.1	16.20	18.40

817/5S

Kg-H1	14400*	6585	3230	2100	1510	1160	935	790	600	460
Kg-H2	10080*	4609	2261	1470	1057	812	654	553	420	322
m.	1.0	2.15	4.45	6.32	8.20	10.15	12.10	14.10	16.20	18.40

817/6S

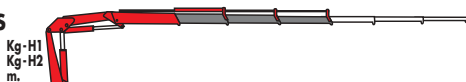
Kg-H1	14000*	6430	3100	2000	1420	1060	845	700	600	460
Kg-H2	9800*	4501	2170	1400	994	742	591	490	420	322
m.	1.0	2.15	4.52	6.40	8.26	10.20	12.20	14.20	16.20	18.40

818/1S

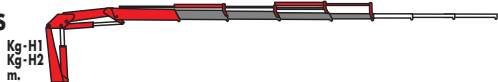
Kg-H1				
Kg-H2				
m.				

818/2S

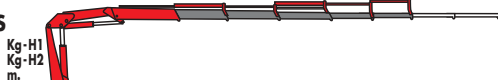
Kg-H1				
Kg-H2				
m.				

818/3S

Kg-H1				
Kg-H2				
m.				

818/4S

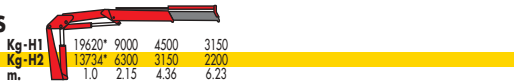
Kg-H1				
Kg-H2				
m.				

818/5S

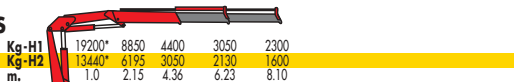
Kg-H1				
Kg-H2				
m.				

818/6S

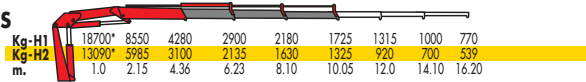
Kg-H1				
Kg-H2				
m.				

820/1S

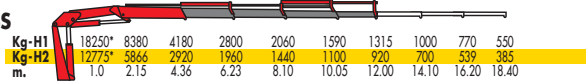
Kg-H1	19620*	9000	4500	3150
Kg-H2	13734*	6300	3150	2200
m.	1.0	2.15	4.36	6.23

820/2S

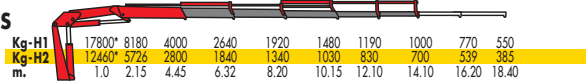
Kg-H1	19200*	8850	4400	3050	2300
Kg-H2	13440*	6195	3050	2130	1600
m.	1.0	2.15	4.36	6.23	8.10

820/3S

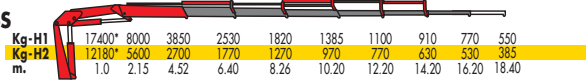
Kg-H1	18700*	8550	4280	2900	2180	1725	1315	1000	770
Kg-H2	13070*	5985	3100	2135	1630	1325	920	700	539
m.	1.0	2.15	4.36	6.23	8.10	10.05	12.0	14.10	16.20

820/4S

Kg-H1	18250*	8380	4180	2800	2060	1590	1315	1000	770	550
Kg-H2	12775*	5865	2920	1960	1440	1100	920	700	539	385
m.	1.0	2.15	4.36	6.23	8.10	10.05	12.00	14.10	16.20	18.40

820/5S

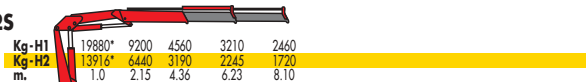
Kg-H1	17800*	8180	4000	2640	1920	1480	1190	1000	770	550
Kg-H2	12460*	5726	2800	1840	1340	1030	830	700	539	385
m.	1.0	2.15	4.45	6.32	8.20	10.15	12.10	14.10	16.20	18.40

820/6S

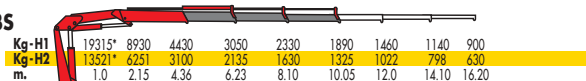
Kg-H1	17400*	8000	3850	2530	1820	1385	1100	910	770	550
Kg-H2	12180*	5600	2700	1770	1270	970	770	630	530	385
m.	1.0	2.15	4.52	6.40	8.26	10.20	12.20	14.20	16.20	18.40

823/1S

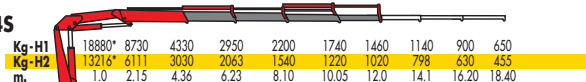
Kg-H1	20320*	9400	4660	3220
Kg-H2	14224*	6380	3260	2325
m.	1.0	2.15	4.36	6.23

823/2S

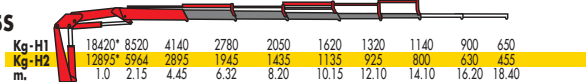
Kg-H1	19880*	9200	4560	3210	2460
Kg-H2	13916*	6440	3190	2245	1720
m.	1.0	2.15	4.36	6.23	8.10

823/3S

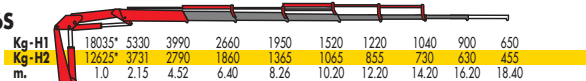
Kg-H1	19315*	8930	4430	3050	2330	1890	1460	1140	900
Kg-H2	13521*	6251	3100	2135	1630	1325	1022	798	630
m.	1.0	2.15	4.36	6.23	8.10	10.05	12.0	14.10	16.20

823/4S

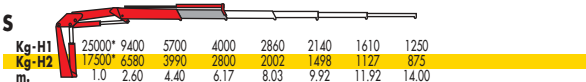
Kg-H1	18880*	8730	4330	2950	2200	1740	1460	1140	900	650
Kg-H2	13216*	6111	3030	2063	1540	1220	1020	798	630	455
m.	1.0	2.15	4.36	6.23	8.10	10.05	12.0	14.1	16.20	18.40

823/5S

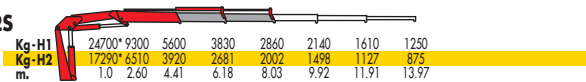
Kg-H1	18420*	8520	4140	2780	2050	1620	1320	1140	900	650
Kg-H2	12895*	5964	2895	1945	1435	1135	925	800	630	455
m.	1.0	2.15	4.45	6.32	8.20	10.15	12.10	14.10	16.20	18.40

823/6S

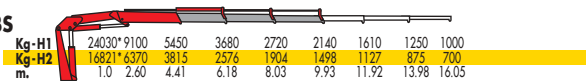
Kg-H1	18035*	8330	3990	2660	1950	1520	1220	1040	900	650
Kg-H2	12625*	5731	2790	1860	1365	1065	855	730	630	455
m.	1.0	2.15	4.52	6.40	8.26	10.20	12.20	14.20	16.20	18.40

825/1S

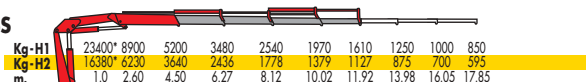
Kg-H1	25000*	9400	5700	4000	2860	2140	1610	1250
Kg-H2	17500*	6580	3990	2800	2002	1498	1127	875
m.	1.0	2.60	4.40	6.17	8.03	9.92	11.92	14.00

825/2S

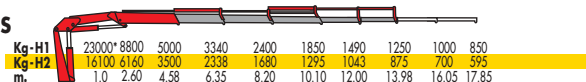
Kg-H1	24700*	9300	5600	3830	2860	2140	1610	1250
Kg-H2	17290*	6510	3920	2681	2002	1498	1127	875
m.	1.0	2.60	4.41	6.18	8.03	9.92	11.91	13.97

825/3S

Kg-H1	24030*	9100	5450	3680	2720	2140	1610	1250	1000
Kg-H2	16821*	6370	3815	2576	1904	1498	1127	875	700
m.	1.0	2.60	4.41	6.18	8.03	9.93	11.92	13.98	16.05


825/4S

Kg-H1	23400*	8900	5200	3480	2540	1970	1610	1250	1000	850
Kg-H2	16380*	6230	3640	2436	1778	1379	1127	875	700	595
m.	1.0	2.60	4.50	6.27	8.12	10.02	11.92	13.98	16.05	17.85

825/5S


Kg-H1	23000*	8800	5000	3340	2400	1850	1490	1250	1000	850
Kg-H2	16100*	6160	3500	2338	1680	1295	1043	875	700	595
m.	1.0	2.60	4.58	6.35	8.20	10.10	12.00	13.98	16.05	17.85

828/25



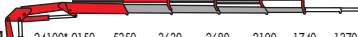
Kg - H1	25450*	9500	5770	4000	3020	2280	1740	1370
Kg - H2	17815*	8650	4039	2800	2114	1596	1218	959
m.	1.0	2.60	4.41	6.18	8.03	9.92	11.91	13.97

828/35




Kg - H1	24800*	9350	5620	3840	2870	2280	1740	1370	1110
Kg - H2	17360*	6545	3934	2688	2009	1596	1218	959	777
m.	1.0	2.60	4.41	6.18	8.03	9.93	11.92	13.98	16.05

828/45




Kg - H1	24100*	9150	5350	3630	2680	2100	1740	1370	1110	950
Kg - H2	16870*	6405	3745	2541	1876	1470	1218	959	777	665
m.	1.0	2.60	4.50	6.27	8.12	10.02	11.92	13.98	16.05	17.85

828/55




Kg - H1	23650*	9000	5160	3490	2540	1980	1610	1360	1110	950
Kg - H2	16555*	6300	3612	2443	1778	1386	1127	952	777	665
m.	1.0	2.60	4.58	6.35	8.20	10.10	12.00	13.98	16.05	17.85

828/65




Kg - H1	23650*	8950	5100	3420	2480	1910	1550	1310	1060	870
Kg - H2	16555*	6265	3570	2394	1736	1337	1085	917	742	609
m.	1.0	2.60	4.64	6.41	8.26	10.16	12.06	14.04	16.02	17.91

828/35 + Jib 3s



Kg - H1						1200	1000	880	780	555
Kg - H2						840	700	616	546	388
m.						12.4	14.0	15.6	17.3	19.1


828/45 + Jib 3s



Kg - H1							930	825	700	630	530
Kg - H2							651	577	490	441	371
m.							14.4	15.9	17.6	19.2	21.0


VR/FM

VR 36/25




Kg - H1	35500*	12100	7300	5200	4000	3050	2350	1800
Kg - H2	24850*	10290	6210	4420	3400	2590	2000	1530
m.	1.0	2.80	4.86	6.56	8.41	10.52	12.62	14.72

VR 36/35




Kg - H1	34900*	12100	7000	5050	3800	3050	2350	1800
Kg - H2	24439*	10290	5950	4290	3230	2590	2000	1530
m.	1.0	2.80	4.99	6.69	8.54	10.39	12.49	14.58

VR 36/45



Kg - H1	34500*	12000	6750	4900	3700	2900	2350	1750	1350
Kg - H2	24150*	10200	5740	4170	3150	2470	2000	1490	1140
m.	1.0	2.80	5.11	6.81	8.66	10.51	12.36	14.46	16.55

VR 36/25 + Jib 3S




Kg - H1							1750	1500	1300	1030	730
Kg - H2							1225	1050	910	721	511
m.							11.42	13.02	14.72	16.39	18.43

VR 36/35 + Jib 3S




Kg - H1							1600	1400	1200	1020	750
Kg - H2							1120	980	840	714	525
m.							13.28	14.88	16.58	18.24	20.28

VR 36/45 + Jib 3S



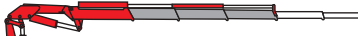
Kg - H1							1100	950	850	690	530
Kg - H2							770	665	595	483	371
m.							15.32	16.92	18.62	20.29	22.33

VR 42/25




Kg - H1	38100*	12270	7480	5360	4160	3200	2490	1920
Kg - H2	26670*	10430	6360	4560	3540	2720	2120	1630
m.	1.0	2.80	4.86	6.56	8.41	10.52	12.62	14.72

VR 42/35




Kg - H1	37500*	12270	7170	5210	3950	3200	2490	1920
Kg - H2	26250*	10430	6090	4430	3360	2720	2120	1630
m.	1.0	2.80	4.99	6.69	8.54	10.39	12.49	14.58

VR 42/45



Kg - H1	37100*	12170	6910	5060	3850	3040	2480	1870	1450
Kg - H2	25970*	10340	5870	4300	3270	2580	2110	1590	1230
m.	1.0	2.80	5.11	6.81	8.66	10.51	12.36	14.46	16.55

VR 42/25 + Jib 3S




Kg - H1							1845	1590	1390	1110	790
Kg - H2							1292	1113	973	770	553
m.							11.42	13.02	14.72	16.39	18.43

VR 42/35 + Jib 3S



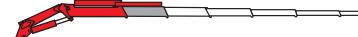
Kg - H1							1700	1500	1290	1100	820
Kg - H2							1190	1050	903	770	574
m.							13.28	14.88	16.58	18.24	20.28

VR 42/45 + Jib 3S



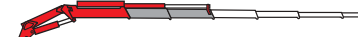
Kg - H1							1180	1020	920	750	580
Kg - H2							826	714	644	525	406
m.							15.32	16.92	18.62	20.29	22.33

VR 52/15




Kg - H1	50000*	16200	11400	7950	5900	4720	3820	2420	1950	1500	900
Kg - H2	35000*	12950	9120	6360	4720	3770	3050	1930	1540	1200	720
m.	1.0	2.80	4.30	6.25	8.09	10.05	12.13	14.33	16.65	19.09	21.65

VR 52/25




Kg - H1	47500*	15950	10650	7400	5700	4600	3700	2300	1850	1400	870
Kg - H2	33250*	12760	8520	5920	4560	3680	2960	1840	1480	1120	690
m.	1.0	2.80	4.42	6.37	8.32	10.28	12.36	14.56	16.88	19.32	21.88

VR 52/35




Kg - H1	46500*	15700	10200	7200	5400	4420	3600	2200	1750	1300	850
Kg - H2	32550*	12560	8160	5760	4320	3530	2880	1760	1400	1040	680
m.	1.0	2.80	4.54	6.49	8.44	10.39	12.47	14.67	16.99	19.43	21.99

VR 52/45




Kg - H1	46000*	15500	9850	7050	5250	4170	3500	2100	1650	1200	820
Kg - H2	32200*	12400	7880	5640	4200	3330	2800	1680	1320	960	650
m.	1.0	2.80	4.66	6.61	8.56	10.51	12.46	14.66	16.98	19.42	21.98

VR 52/55




Kg - H1	46000*	15300	9650	6850	5050	3970	3300	2850	1920	1350	770
Kg - H2	32200*	12240	7720	5480	4040	3170	2640	2280	1530	1080	610
m.	1.0	2.80	4.78	6.73	8.68	10.63	12.58	14.53	16.73	18.93	21.13

VR 52/65




Kg - H1	45500*	15100	9300	6500	4750	3750	3100	2650	2250	1320	750
Kg - H2	31850*	12080	7440	5200	3800	3000	2480	2120	1800	1050	600
m.	1.0	2.80	4.90	6.85	8.80	10.75	12.70	14.65	16.60	18.80	21.00

VR 52/75



Kg - H1	45000*	14630	8690	5890	4340	3800	2750	2320	2010	1800
Kg - H2	31500*	11700	6950	4710	3470	3040	2200	1850	1600	1440
m.	1.0	2.80	5.02	6.97	8.92	10.17	12.82	14.77	16.72	18.67

VR 52/85



Kg - H1	44500*	14500	8450	5700	4200	3250	2600	2200	1900	1650	1500
Kg - H2	31150*	11600	6740	4560	3360	2600	2080	1760	1520	1320	1200
m.	1.0	2.80	5.14	7.09	9.04	10.99	12.94	14.89	16.84	18.79	20.74

VR 52/65 + Jib 4S

VR 72/2S

Kg - H1	98000*	16400	11700	8800	7100	5900	4900	4200	3550	2900	2150	1350
Kg - H2	68600*	13280	9360	7040	5680	4720	3920	3360	2840	2320	1720	1080
m.	1.0	4.04	5.79	7.74	9.58	11.42	13.38	15.46	17.66	19.98	22.42	24.98

VR 72/3S

Kg - H1	68000*	16250	11300	8350	6900	5650	4700	4000	3400	2800	2100	1350
Kg - H2	47600*	13000	9040	6680	5520	4520	3760	3200	2720	2240	1680	1080
m.	1.0	4.07	5.82	7.77	9.72	11.56	13.52	15.60	17.80	20.12	22.56	25.15

VR 72/4S

Kg - H1	67000*	16000	11000	8000	6500	5400	4500	3800	3250	2700	2050	1350
Kg - H2	46900*	12800	8800	6400	5300	4320	3600					
m.	1.0	4.10	5.85	7.80	9.75	11.70	13.66	15.74	17.94	20.26	22.70	25.26

VR 72/5S

Kg - H1	64000*	15700	10440	7650	6050	4950	4300	3600	3100	2600	2000	1350
Kg - H2	44800*	12560	8500	6120	4840	3960	3440	2880	2480	2080	1600	1080
m.	1.0	4.22	5.97	7.92	9.87	11.82	13.77	15.85	18.05	20.37	22.81	25.37

VR 72/6S

Kg - H1	60000*	14700	9800	7200	5600	4600	3850	3400	2950	2500	1950	1350
Kg - H2	42000*	11760	7840	5760	4480	3680	3080	2720	2360	2000	1560	1080
m.	1.0	4.33	6.06	8.03	9.98	11.93	13.88	15.83	18.03	20.35	22.79	25.35

VR 72/7S

Kg - H1	58000*	14000	9350	6900	5350	4350	3600	3150	2800	2400	1900	1350
Kg - H2	40600*	11200	7480	5520	4280	3480	2880	2520	2240	1920	1520	1080
m.	1.0	4.44	6.19	8.14	10.09	12.04	13.99	15.94	17.89	20.21	22.65	25.21

VR 72/8S

Kg - H1	56500*	13500	8950	6450	5000	4000	3350	2900	2550	2300	1850	1350
Kg - H2	39550*	10800	7160	5160	4000	3200	2680	2320	2040	1840	1480	1080
m.	1.0	4.55	6.30	8.25	10.20	12.15	14.10	16.05	18.00	19.95	22.39	24.95

VR 72/6S + Jib 4S

Kg - H1										2000	1800	1650	1500	1250
Kg - H2										1400	1260	1155	1050	875
m.										18.90	20.40	21.90	23.40	24.90

VR 80/2S

Kg - H1	75000*	18260	12870	9680	7810	6490	5390	4620	3900	3190	2350	1350
Kg - H2	52500*	14600	10290	7740	6240	5190	4310	3690	3120	2550	1880	1080
m.	1.0	4.04	5.79	7.74	9.58	11.42	13.38	15.46	17.66	19.98	22.42	24.98

VR 80/3S

Kg - H1	74000*	17870	12430	9180	7590	6220	5170	4400	3740	3100	2300	1350
Kg - H2	51800*	14290	9940	7340	6070	4970	4130	3520	2990	2480	1840	1080
m.	1.0	4.07	5.82	7.77	9.72	11.56	13.52	15.60	17.80	20.12	22.56	25.15

VR 80/4S

Kg - H1	72000*	17600	12100	8900	7150	5950	4950	4200	3570	2970	2250	1350
Kg - H2	50400*	14080	9680	7040	5720	4760	3960	3360	2850	2370	1800	1080
m.	1.0	4.10	5.85	7.80	9.75	11.70	13.66	15.74	17.94	20.26	22.70	25.26

VR 80/5S

Kg - H1	69000*	17270	11480	8400	6650	5450	4750	3950	3400	2850	2200	1350
Kg - H2	48300*	13810	9180	6720	5320	4360	3800	3160	2720	2280	1760	1350
m.	1.0	4.22	5.97	7.92	9.87	11.82	13.77	15.85	18.05	20.37	22.81	25.37

VR 80/6S

Kg - H1	66000*	16150	10750	7900	6150	5050	4250	3750	3250	2750	2150	1350
Kg - H2	46200*	12920	8600	6320	4920	4040	3400	3000	2600	2200	1720	1080
m.	1.0	4.33	6.08	8.03	9.98	11.93	13.88	15.83	18.03	20.35	22.79	25.35

VR 80/7S

Kg - H1	64000*	15400	10300	7600	5900	4800	3950	3450	3050	2650	2100	1350
Kg - H2	44800*	12320	8240	6080	4720	3840	3160	2760	2440	2120	1680	1080
m.	1.0	4.44	6.19	8.14	10.09	12.04	13.99	15.94	17.89	20.21	22.65	25.21

VR 80/8S

Kg - H1	62000*	14850	9850	7100	5500	4400	3700	3200	2800	2550	2050	1350
Kg - H2	43400*	11880	7880	5680	4400	3520	2960	2560	2240	2040	1640	1080
m.	1.0	4.55	6.30	8.25	10.20	12.15	14.10	16.05	18.00	19.95	22.39	24.95

VR 80/6S + Jib 4S

Kg - H1										2200	2000	1800	1650	1400
Kg - H2										1540	1400	1260	1155	980
m.										18.90	20.40	21.90	23.40	24.90

SC/FM

1817

Kg - H1	840	480
Kg - H2	710	410
m.	3,25	5,18

3821

Kg - H1	1750	1100	800
Kg - H2	1490	940	680
m.	3,16	4,78	6,40

5221

Kg - H1	2350	1500	1100
Kg - H2	2010	1280	940
m.	3,16	4,78	6,40

6121

Kg - H1	9200*	2800	1800	1330
Kg - H2	9200*	2380	1530	1130
m.	1,00	3,30	4,90	6,40

6421

Kg - H1	9000*	2200	1700	1300
Kg - H2	9000*	1870	1450	1110
m.	0,9	4,04	5,29	6,54

7226

Kg - H1	10000*	2000	1500	1200
Kg - H2	10000*	1700	1280	1020
m.	0,9	4,87	6,37	7,87

*) Portata teorica - Theoretical lifting capacity



JT/FM

250/1S

Kg - H1	2500	1900
Kg - H2	2130	1620
m.	8.30	10.50

250/2S

Kg - H1	2400	1780	1400
Kg - H2	2040	1510	1190
m.	8.30	10.50	12.70

Crane model	max. outreach m.	Outreach lifting cap. kg.		Rot. (°)
		H1B3	H2B3	



T

702 T F/M 1S	3.13	580	490	370
702 T F/M 2S	4.70	380	320	370
703 T F/M 1S	3.14	910	770	370
703 T F/M 2S	4.70	580	490	370
705 T F/M 2S	4.96	750	640	380
705 T F/M 3S	6.42	550	440	380
807 T F/M 2S	5.28	1230	1050	380
807 T F/M 3S	7.11	830	710	380
8500ss F/M 2S	5.70	1350	945	360
8500ss F/M 3S	7.33	920	644	360
815 T F/M 2S	5.92	2285	1599	380
815 T F/M 3S	7.99	1550	1085	380
815 T F/M 4S	10.05	1125	791	380
817 T F/M 2S	5.92	2390	1680	380
817 T F/M 3S	7.99	1640	1148	380
817 T F/M 4S	10.05	1200	847	380



A

703 F/M 1S	4.75	560	480	370
703 F/M 2S	6.20	405	340	370
703 F/M 3S	7.66	300	250	370
704 F/M 1S	5.06	720	610	380
704 F/M 2S	6.62	535	450	380
704 F/M 3S	8.17	370	322	380
704 F/M 4S	9.63	280	196	380
706 F/M 1S	5.24	1210	847	380
706 F/M 2S	6.93	870	740	380
706 F/M 3S	8.63	640	540	380
809 F/M 1S	5.60	1700	1450	380
809 F/M 2S	7.35	1200	1020	380
809 F/M 3S	9.18	810	690	380
811 F/M 1S	5.60	1860	1580	380
811 F/M 2S	7.35	1320	1120	380
811 F/M 3S	9.18	900	770	380
812 F/M 1S	6.14	1910	1337	380
812 F/M 2S	8.10	1360	952	380
812 F/M 3S	10.16	1000	700	380
812 F/M 4S	12.23	730	511	380
812 F/M 5S	12.31	665	465	380
815 F/M 1S	6.14	2240	1568	380
815 F/M 2S	8.10	1600	1120	380
815 F/M 3S	10.16	1180	826	380
815 F/M 4S	12.23	880	616	380
815 F/M 5S	12.31	800	560	380
817 F/M 1S	6.23	2520	1764	410
817 F/M 2S	8.10	1830	1281	410
817 F/M 3S	10.05	1370	959	410
817 F/M 4S	12.00	1040	728	410
817 F/M 5S	14.10	790	553	410
817 F/M 6S	14.20	700	490	410
818 F/M 1S	-	-	-	-
818 F/M 2S	-	-	-	-
818 F/M 3S	-	-	-	-
818 F/M 4S	-	-	-	-
818 F/M 5S	-	-	-	-
818 F/M 6S	-	-	-	-
820 F/M 1S	6.23	3150	2200	410
820 F/M 2S	8.10	2300	1600	410
820 F/M 3S	10.05	1725	1325	410
820 F/M 4S	12.00	1315	920	410
820 F/M 5S	14.10	1000	700	410
820 F/M 6S	16.20	770	530	410
823 F/M 1S	8.03	2860	2430	410
823 F/M 2S	9.93	2140	1820	410
823 F/M 3S	11.92	1610	1370	410
823 F/M 4S	13.98	1250	1060	410
823 F/M 5S	16.02	960	820	410
823 F/M 6S	16.20	900	630	410
825 F/M 1S	6.17	4000	2800	400
825 F/M 2S	8.03	2860	2430	400
825 F/M 3S	9.93	2140	1820	400
825 F/M 4S	11.92	1610	1370	400
825 F/M 5S	13.98	1250	1060	400
825 F/M 6S	16.02	960	672	400
825 F/M 3SJ3	17.3	700	490	400
825 F/M 4SJ3	19.2	565	395	400

Crane model	max. outreach m.	Outreach lifting cap. kg.		Rot. (°)
		H1B3	H2B3	



VR

828 F/M 1S	6.18	4180	2800	400
828 F/M 2S	8.03	3020	2114	400
828 F/M 3S	9.93	2280	1596	400
828 F/M 4S	11.92	1740	1218	400
828 F/M 5S	13.98	1360	952	400
828 F/M 6S	16.02	1060	742	400
828 F/M 3SJ3	17.3	780	546	400
828 F/M 4SJ3	19.2	630	441	400
VR36 F/M 2S	8.41	4000	3400	400
VR36 F/M 3S	10.40	3050	2590	400
VR36 F/M 4S	12.40	2350	2000	400
VR36 F/M 2SJ3	16.39	1030	870	400
VR36 F/M 3SJ3	18.24	1020	860	400
VR36 F/M 4SJ3	20.29	690	580	400
VR42 F/M 2S	8.41	4600	3540	400
VR42 F/M 3S	10.40	3500	2720	400
VR42 F/M 4S	12.40	2700	2110	400
VR42 F/M 2SJ3	16.39	1180	940	400
VR42 F/M 3SJ3	18.24	1170	930	400
VR42 F/M 4SJ3	20.29	790	640	400
VR52 F/M 1S	6.25	7950	6360	400
VR52 F/M 2S	8.32	5700	4560	400
VR52 F/M 3S	10.40	4420	3530	400
VR52 F/M 4S	12.46	3500	2800	400
VR52 F/M 5S	14.53	2850	2280	400
VR52 F/M 6S	16.60	2250	1800	400
VR52 F/M 7S	18.67	1800	1440	400
VR52 F/M 8S	20.74	1500	1200	400
VR52 F/M 6SJ4	24.87	630	441	400
VR60 F/M 1S	6.25	8750	7000	400
VR60 F/M 2S	8.32	6270	5010	400
VR60 F/M 3S	10.40	4860	3880	400
VR60 F/M 4S	12.46	3850	3080	400
VR60 F/M 5S	14.53	3150	2520	400
VR60 F/M 6S	16.60	2450	1960	400
VR60 F/M 7S	18.67	1980	1580	400
VR60 F/M 8S	20.74	1650	1320	400
VR60 F/M 6SJ4	27.8	370	259	400
VR72 F/M 2S	7.74	8800	7040	400
VR72 F/M 3S	10.0	6900	5520	400
VR72 F/M 4S	11.70	5400	5200	400
VR72 F/M 5S	13.77	4300	3440	400
VR72 F/M 6S	15.83	3400	2720	400
VR72 F/M 7S	17.90	2800	2240	400
VR72 F/M 8S	19.95	2300	1840	400
VR72 F/M 6SJ4	24.90	1250	875	400
VR80 F/M 2S	7.74	9680	7740	400
VR80 F/M 3S	10.0	7590	6070	400
VR80 F/M 4S	11.70	5950	4760	400
VR80 F/M 5S	13.77	4750	3800	400
VR80 F/M 6S	15.83	3750	3000	400
VR80 F/M 7S	17.90	3050	2440	400
VR80 F/M 8S	19.95	2550	2040	400
VR80 F/M 6SJ4	24.90	1400	980	400

CONTINUA - ENDLESS

JT



JT250 F/M 1S	10.50	1900	1620
JT250 F/M 2S	12.70	1400	1190

SC



SC1817F/M	5.18	480	410
SC3821F/M	6.40	800	680
SC5221F/M	6.40	1100	940
SC6121F/M	6.40	1330	1130
SC6421F/M	6.54	1300	1110
SC7226F/M	7.87	1200	1020

















